

# 'GLOUTON'

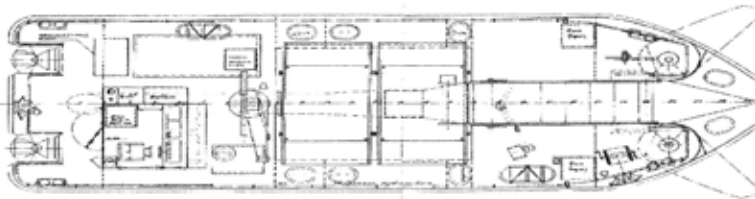


ANTI-POLLUTION VESSEL - 16 m



Coastal and harbour anti-pollution ship, designed for solid floating garbage and hydrocarbons collection

- 32 m<sup>3</sup>/h hydrocarbons pump



# 'GLOUTON'

## ANTI-POLLUTION VESSEL - 16 m

### MAIN CHARACTERISTICS

Length overall	15.5 m
Length bp	15.3 m
Breadth	4.98 m
Depth on main deck	2 m
Fuel oil	3300 l
Crew	2
Speed	7 kn
Tonnage	33 GT
Hull / Superstructure	steel / aluminium

### SPECIAL EQUIPMENT

#### Solid garbage collection

Hydraulic cylinder opening bow doors	2
Metal garbage collecting conveyor with hydraulic power engine	
Hydraulic stirrer allowing water flow at collecting conveyor entrance	
Trolleys	2 x 5 m <sup>3</sup>

#### Hydrocarbons collection

Collecting head with adjustable sill	
Hydrocarbons pumps	2 x 32 m <sup>3</sup> /h - 3 bar
Hydrocarbons holds	2 x 11 m <sup>3</sup>
Decanted water extraction by electronic pump	

#### Hydrocarbons processing

Spreader holds with electronic pump - spreading bow	2 x 2000 l
---	------------

### CLASSIFICATION

Bureau Veritas  $\times$  I<sub>3/3</sub> E  
Special service  
Water surface cleaner  
AUT/MS

### MISCELLANEOUS EQUIPMENT

#### Anchoring

Hydraulic windlass  
Anchor 80 kg

#### Cranes

Hydraulic crane 12 t.m  
Capstan for two 5 m<sup>3</sup> trolleys  
Driven hydraulic plant

#### Divers

Fire electronic pump 30 m<sup>3</sup> - 3 bar  
Detection and fire defense by CO<sub>2</sub>

### PROPULSION/MACHINERY

#### Propulsion

Diesel engine 1 x 1000 kW  
Thrusting hydraulic plant  
Drying pump 25 m<sup>3</sup>/h - 3 bar  
Fire pump 27 m<sup>3</sup>/h - 5 bar  
Thruster

#### Machinery

Genset 15.80 kVA / 380 V  
Driven generator 50 A / 24 V  
Air cooler