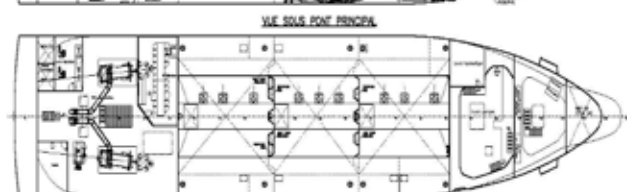
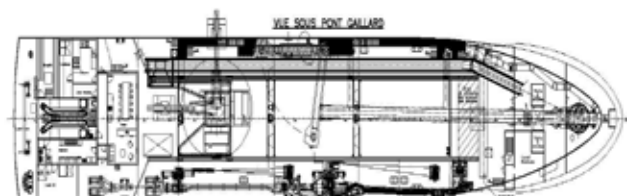
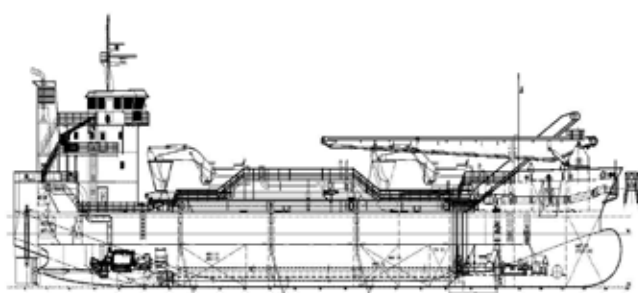


'MICHEL DSR'



SAND CARRIER - 85 m - 2300 m³



Multipurpose cargo ship designed for loading and transportation of marine aggregates and minerals. Equipped with conveyor for dry cargo auto-unloading.

- 2300 m³ hoppers
- 5000/h / 2.5 bar dredging pump
- 5000 m³/h / 6.8 bar unloading pump
- 7 m³ hydraulic shovel with bucket

'MICHEL DSR'

SAND CARRIER - 85 m - 2300 m³



MAIN CHARACTERISTICS

Length overall	85.00 m
Breadth	15.85 m
Depth on main deck	7.30 m
Full load draught	5.98 m
Deadweight	approx. 3420 t
Fuel oil	190 m ³
Fresh water	48 m ³
Crew	7
Speed	13 kn
Tonnage	2839 UMS
Hull / Superstructure	steel / aluminium

SPECIAL EQUIPMENT

3 hoppers total 2300 m³

Dredging and unloading equipment

Dredging pump	5000 m ³ /h - 2.5 bar
Unloading pump	5000 m ³ /h - 6.8 bar
Dilution system	1300 m ³ /h - 8 bar
Hopper trailing suction	600 mm - 40 m dredging depth - bow coupling

Dry unloading

Hydraulic shovel with bucket	7 m ³
Hopper and conveyors	
Hopper furling cover for bulk transportation	

MISCELLANEOUS EQUIPMENT

Electric bow thruster 400 kW

Anchoring

Anchors 2 x 1850 kg + 230 m chain Ø 46 mm
Capstans 2 x 7.5 t

PROPULSION / MACHINERY

Propulsion

Diesel engines 2 x 1920 kW - 1500 rpm
Gearbox Ratio 6.179/1
Propeller 4 controllable blades Ø 2400 mm

Machinery

Driven generators 2 x 1900 kVA / 690 V / 50 Hz
2 x 300 kVA / 400 V / 50 Hz
Emergency genset 1 x 178 kVA / 400 V / 50 Hz