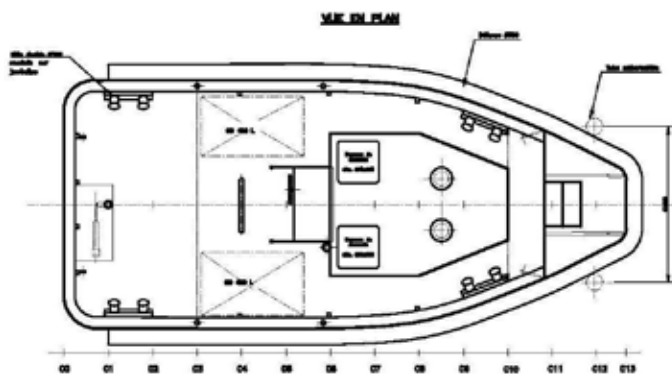
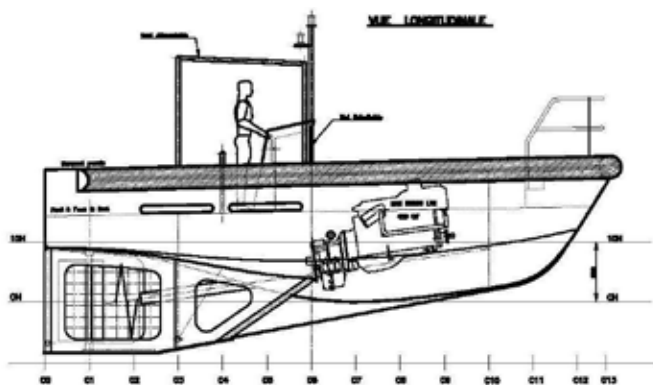


'GIRASSOL TD'



WORK BOAT - 8 m



Work boat developed for marine works assistance

'GIRASSOL TD'

WORK BOAT - 8 m

MAIN CHARACTERISTICS

Length overall	7.70 m
Breadth	3.40 m
Depth on main deck	1.16 m
Fuel oil	2 x 400 l
Hull	aluminium

PROPULSION / MACHINERY

Engine Diesel	400 CV - 2100 rpm
Driven generator	
Propeller	Ø 1000 mm