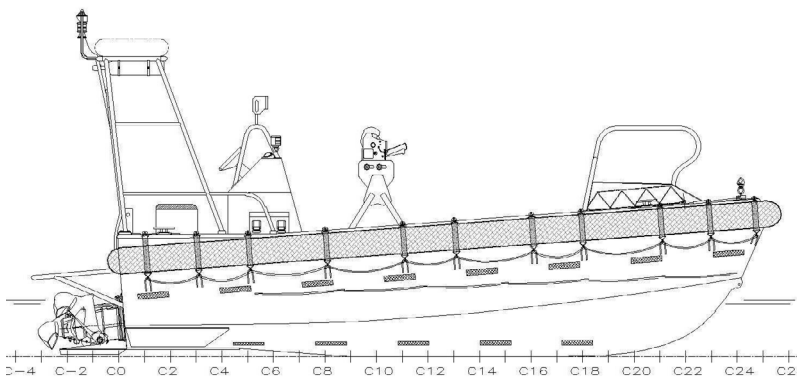


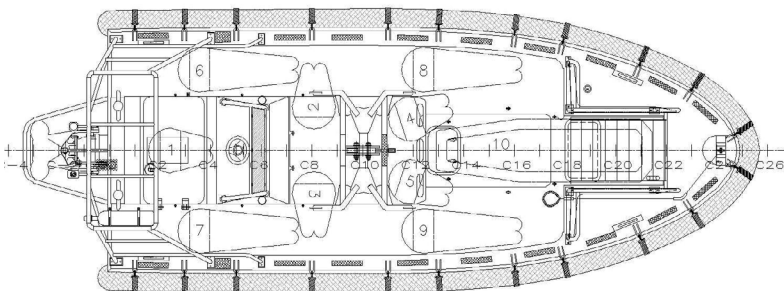
FRB 720



FAST RESCUE BOAT - 7.20 m



TOP VIEW



The FRB 720 is designed as a FSIV on board installation as well as a crew transfer boat, or rescue boat compliant with the international Life Saving Appliance code (LSA code). She is also a real sea-going performing work boat

- PIRIOU design
- Easy and safe crew transfer thanks to built-in bow landing
- Off load hook for quick release from davit
- Arrangement for 1 stretcher for rescue operations
- Optimized power-to-weight ratio enabling high maximal speed
- Shallow draft allowing access and operations near shore and in deltas

FRB 720

FAST RESCUE BOAT - 7.20 m



MAIN CHARACTERISTICS

Length overall	7.28 m
Breadth (incl. fenders)	2.71 m
Draught	0.58 m
Hull / superstructure	aluminium
Fuel oil capacity	175 L
Lightship with FO	2775 kg
Total weight (incl. 10 p.)	3600 kg
Rule capacity (FRB)	9 p.
Stretcher	1

SPECIAL EQUIPMENT

Bow fender	250 mm heavy duty
Side fender	Ø 250 mm
Waterjet protection frame	1
Off load hook	1
Towing bollard on transom	2
VHF	1
Safety equipment	

CLASSIFICATION

IMO LSA Code - Resolution MSC.48(66)
Testing & Evaluation of Life-Saving Appliances - Resolution MSC.81(70)
MED A. 1/1.20 EU directive 96/98/EU
as amended by EU directive 2010/68/EU delivered by BV

PERFORMANCES

Speed with 3 persons on board	28 kn
Speed with 10 persons on board	23 kn

PROPULSION / MACHINERY

Propulsion	
Engines	1 x 191 kW Diesel (260 HP)
Propulsion	1 waterjet
Intermediate shaft	1
Machinery	
Batteries	2 x 100 Ah