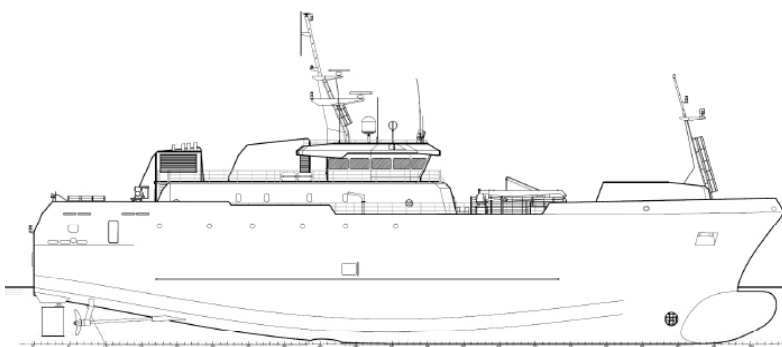


# 'ILE DE LA REUNION II'



FREEZER LONGLINER - 63 m - 650 m<sup>3</sup>

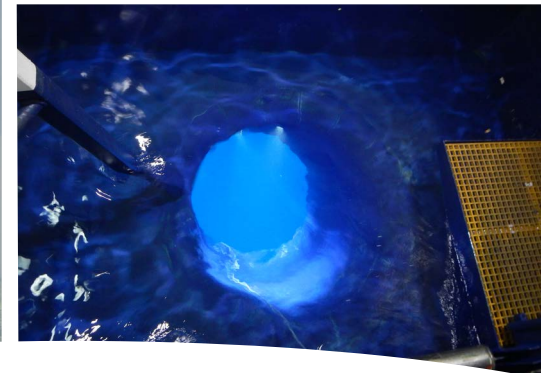
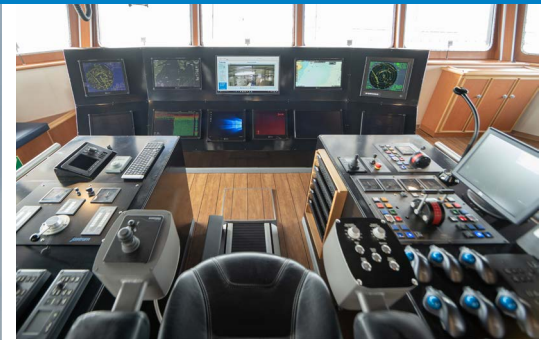


Freezer longliner designed for austral and antarctic toothfish fishing and - 25°C fish conservation

- Diesel electric bipropulsion providing flexible energy management, simplified maintenance and fuel oil savings
- Moonpool system with central lines hauling providing better crew safety and environmental protection
- 650 m<sup>3</sup> fish holds
- 95 m<sup>3</sup> by-product holds for zero reject
- ICE CLASS IC

# 'ILE DE LA REUNION II'

**FREEZER LONGLINER - 63 m - 700 m<sup>3</sup>**



## MAIN CHARACTERISTICS

Length overall	62.8 m
Breadth	12.4 m
Depth on main deck	5.55 m
Fuel oil capacity	525 m <sup>3</sup>
Fresh water capacity	110 m <sup>3</sup>
Crew	32
Max. speed	13 kn
Economical speed	11 kn
Hull/superstructure	steel/aluminium

## SPECIAL EQUIPMENT

### Fishing equipment

Longline	Mustad autoline system
Hauling	Moonpool system

### Fish processing and storage

Fish holds	650 m <sup>3</sup> @ - 25°C
By-product holds	95 m <sup>3</sup>

### Refrigerating system

Freezers	3 x 4 t/20 h @ - 18°C
----------	-----------------------

### Handling

Fore crane	2 t/7m
Aft crane	2 t/7m

## CLASSIFICATION

Bureau Veritas I ✕ HULL • MACH  
Fishing vessel  
Unrestricted navigation  
ICE CLASS IC

## MISCELLANEOUS EQUIPMENT

### Fresh water system

Reverse osmosis system 2 x 5 t/day

### Transverse thruster

FP driven with variable speed electric motor

### Stabilization

passive antiroll tank

## PROPULSION / MACHINERY

### Propulsion

Diesel electric 2 x 900 kW  
Propellers FPP

### Machinery

Main generators 4 x 975 kVA  
IMO TIER II